

Regrooving guidelines

All Semperit tires which can be regrooved have, on both sidewalls, in accordance with ECE regulation 54, the word **REGROOVABLE**

The additional tread depth of up to 4 mm gained by regrooving means a significant increase in performance.

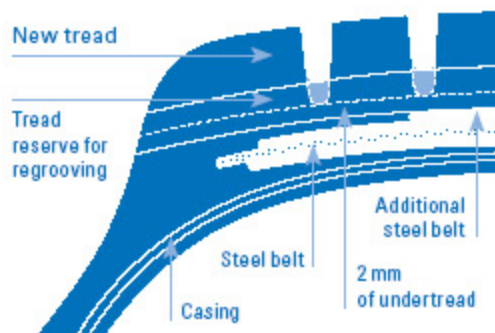
As part of their design all-steel truck tires have a so-called tread stock between the upper edge of the belt and the tread grooves. This tread stock is intended to prevent stones etc. penetrating the steel belts and casing.

Provided it is marked "REGROOVABLE", a commercial vehicle tire may be regrooved down to a residual undertread thickness of 2 mm above the breaker or belt.

All additional regulations of the respective country have to be met.

Although tires can be remoulded after reaching the legal wear limit, regrooving is not advisable in every case. The tread stock thickness is reduced and stones etc. can more easily penetrate and damage the steel belts, leading to rust formation. This has a decidedly negative effect on the tire's suitability for retreading.

The best time for remoulding is when the tread is worn down to about 3 mm. The tire must then be checked to make sure the wear is even all round. Attention should be paid to local or uneven wear patches.



Example:

Tire size	315/80 R 22.5 M 430
Original depth of the new tire	20.0 mm
Additional tread as a result of regrooving	4.0 mm

Regrooving may only be carried out by a qualified expert, in order to avoid premature failure as well as any reduction in the tire's suitability for remoulding.

In some countries (e.g. Germany for KOM-100 coaches and Austria for coaches) regrooving of front axle tires for coaches is prohibited. In general regrooving on front axle coach tires is not recommended.

All Semperit tires on which regrooving is permitted are marked "Regroovable".

RUNNER F

Runner F2



Tire size	Depth (mm)	Width (mm)
315/70 R 22.5	2.0	10
315/80 R 22.5	3.0	10

RUNNER D

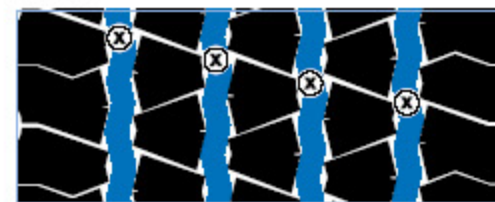
Runner D2



Tire size	Depth (mm)	Width (mm)
315/70 R 22.5	2.0	A: 7, B: 5
315/80 R 22.5	3.0	A: 7, B: 5

EURO-FRONT

M 350



Tire size	Depth (mm)	Width (mm)
295/80 R 22.5	3.0	10-12
315/80 R 22.5	3.0	10-12

M 350



Tire size	Depth (mm)	Width (mm)
315/70 R 22.5	3.0	11-12
385/65 R 22.5	3.5	11-12

⊗ = Measuring point

EURO-FRONT

M 249



Tire size	Depth (mm)	Width (mm)
245/70 R 19.5	3.0	9-11
265/70 R 19.5	2.5	9-11
285/70 R 19.5	3.0	9-11

EURO-FRONT



Tire size	Depth (mm)	Width (mm)
295/60 R 22.5	3.5	10-12
315/60 R 22.5	3.5	10-12

M 434



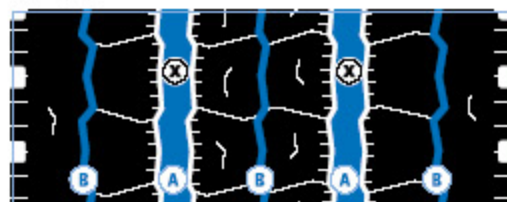
Tire size	Depth (mm)	Width (mm)
11 R 22.5	3.5	A: 8-10, B: 4-5
12 R 22.5	3.5	A: 8-10, B: 4-5
13 R 22.5	3.5	A: 8-10, B: 4-5

M 349



Tire size	Depth (mm)	Width (mm)
275/70 R 22.5	2.5	10-12

M 434



Tire size	Depth (mm)	Width (mm)
205/75 R 17.5	2.5	A: 7-8, B: 3-4
215/75 R 17.5	2.0	A: 7-8, B: 3-4
225/75 R 17.5	2.5	A: 7-8, B: 3-4
235/75 R 17.5	2.5	A: 7-8, B: 3-4

M 248



Tire size	Depth (mm)	Width (mm)
7.00 R 16	1.5	A: 9-10, B: 5-6
7.50 R 16	1.5	A: 9-10, B: 5-6
8 R 17.5 C	2.0	A: 9-10, B: 5-6
8.5 R 17.5	2.0	A: 9-10, B: 5-6
10 R 17.5	2.5	A: 9-10, B: 5-6

EURO-DRIVE

EURO-DRIVE



Tire size	Depth (mm)	Width (mm)
295/60 R 22.5	2.5	A: 8-10, B: 3-4
315/60 R 22.5	3.5	A: 8-10, B: 3-4

M 255



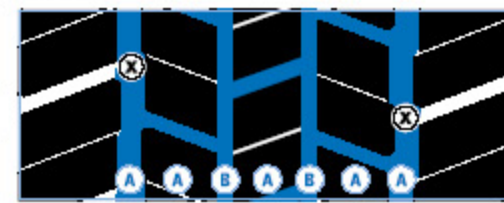
Tire size	Depth (mm)	Width (mm)
245/70 R 19.5	3.0	A: 11, B: 5
265/70 R 19.5	2.5	A: 11, B: 5
285/70 R 19.5	3.0	A: 11, B: 5

M 470



Tire size	Depth (mm)	Width (mm)
275/70 R 22.5	3.0	A: 8-10, B: 3-4
315/70 R 22.5	4.0	A: 8-10, B: 3-4
295/80 R 22.5	4.0	A: 8-10, B: 3-4
315/80 R 22.5	3.0	A: 8-10, B: 3-4
11 R 22.5	3.5	A: 8-10, B: 3-4
12 R 22.5	4.0	A: 8-10, B: 3-4

M 470



Tire size	Depth (mm)	Width (mm)
205/75 R 17.5	2.5	A: 6-7, B: 3-4
215/75 R 17.5	2.5	A: 6-7, B: 3-4
225/75 R 17.5	2.5	A: 6-7, B: 3-4
235/75 R 17.5	2.5	A: 6-7, B: 3-4

⊗ = Measuring point

EURO-TRAILER

EURO-TRAILER



Tire size	Depth (mm)	Width (mm)
385/55 R 22.5	3.5	12

M 422



Tire size	Depth (mm)	Width (mm)
11 R 22.5	3.5	8-10

M 223



Tire size	Depth (mm)	Width (mm)
265/70 R 19.5	3.0	8

M 222



Tire size	Depth (mm)	Width (mm)
365/80 R 20	3.5	8-10

M 423



Tire size	Depth (mm)	Width (mm)
215/75 R 17.5	2.5	10-11
235/75 R 17.5	1.5	10-11
245/70 R 17.5	1.5	10-11

ATHLET-FRONT

ATHLET-FRONT



Tire size	Depth (mm)	Width (mm)
315/80 R 22.5	3.0	12

ATHLET-FRONT



Tire size	Depth (mm)	Width (mm)
12 R 22.5	3.5	12
13 R 22.5	3.5	12

M 235



Tire size	Depth (mm)	Width (mm)
12.00 R 20	4.0	8-10
14.00 R 20 TT	4.0	8-10
14.00 R 20 TL	4.0	8-10

⊗ = Measuring point

ATHLET-DRIVE

ATHLET-TRAILER

SNOW-FRONT

SNOW-DRIVE

ATHLET-DRIVE



Tire size	Depth (mm)	Width (mm)
315/80 R 22.5	3.5	12-14

M 277



Tire size	Depth (mm)	Width (mm)
385/65 R 22.5	3.5	10-12

M 440



Tire size	Depth (mm)	Width (mm)
295/80 R 22.5	3.5	A: 11-13, B: 10
315/80 R 22.5	3.0	A: 11-13, B: 10

M 431



Tire size	Depth (mm)	Width (mm)
295/80 R 22.5	4.0	10
315/80 R 22.5	3.5	10
12 R 22.5	4.0	10

ATHLET-DRIVE



Tire size	Depth (mm)	Width (mm)
12 R 22.5	3.5	12-14
13 R 22.5	3.5	12-14

M 529



Tire size	Depth (mm)	Width (mm)
8.5 R 17.5	2.0	5-7

⊗ = Measuring point